

# Signing into the Chrome Browser on a PC or Mac

You must go through these steps the first time to ensure that personal bookmarks, extensions and passwords are not attached to student logins.

## ***Why we have students sign into Chrome:***

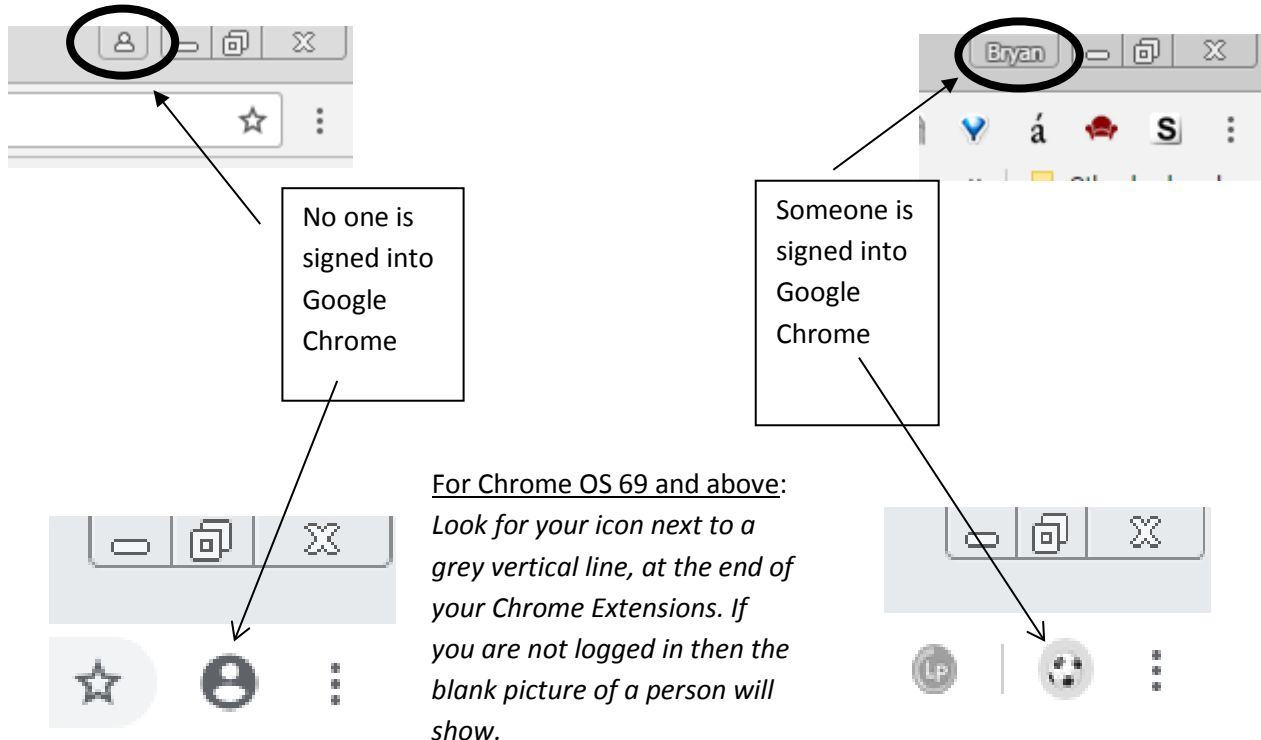
- The simsburyschools.net bookmark folder gives them access to district subscriptions like Discovery Education.
- Simsbury School's Chrome extensions like Read and Write for Google will be accessible.

## ***Steps to ensure proper signing into Chrome by student:***

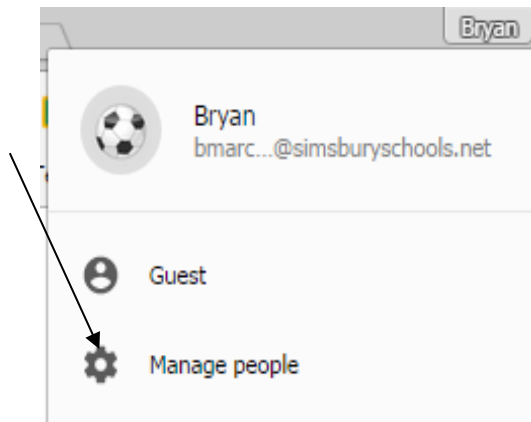
Determine if you are signed in or not before signing your student into Chrome.

For Chrome OS 68 and below:

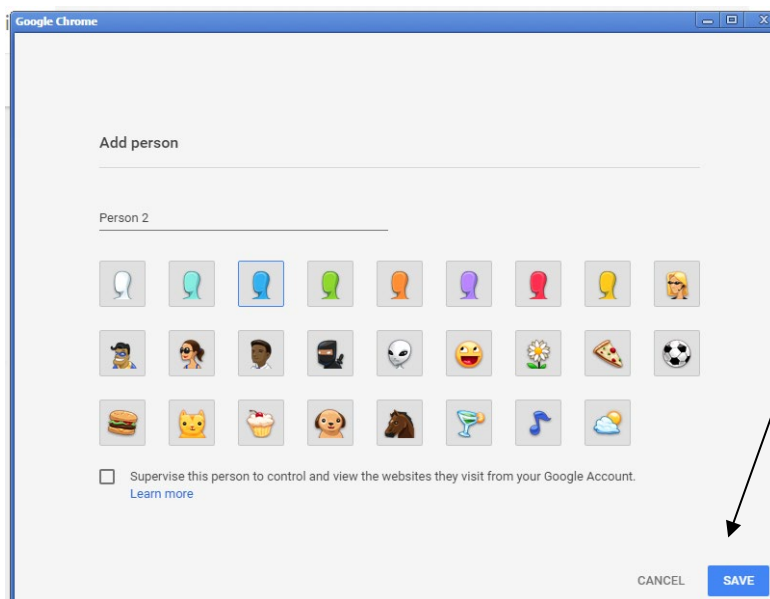
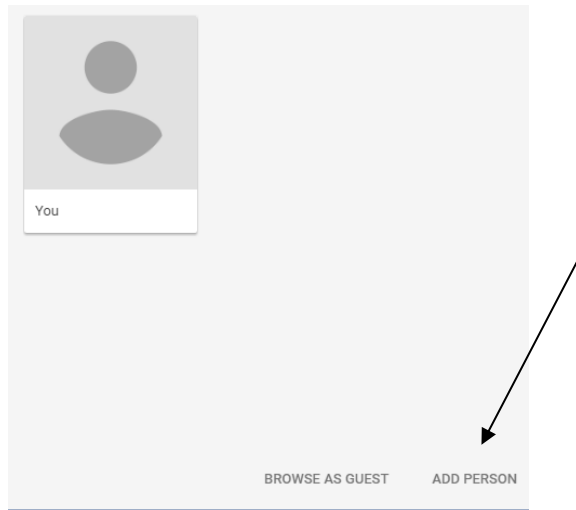
*Look for your username on top of the Chrome Browser. It will say your name or nickname if you are logged in. If it shows a blank picture of a person, it means that you are not.*



- a. If you are signed in or not, the procedure is the same. Click on the image of the person, the picture icon or your name and choose 'Manage people'.



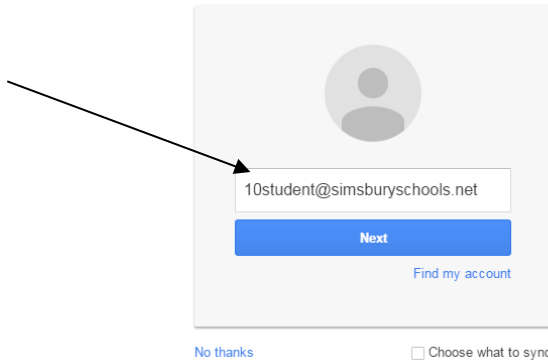
- b. Then select 'ADD PERSON' at the bottom of the next screen



- c. You can have your student choose an appropriate image and then click 'save'.

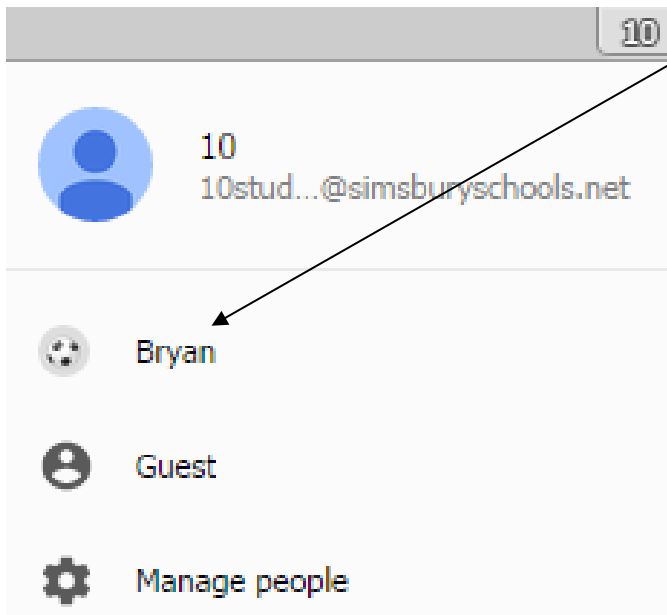
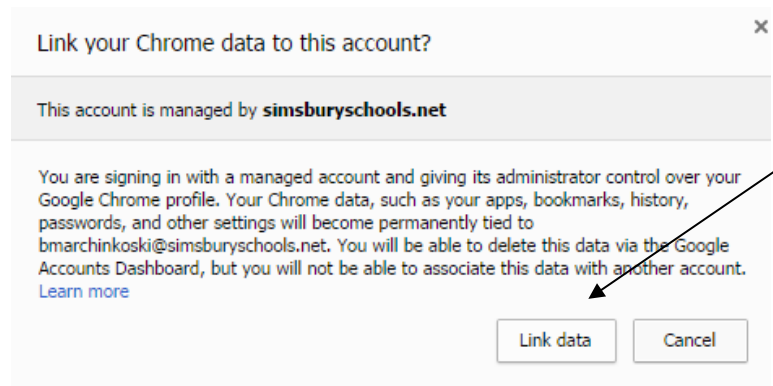
## Sign in to Chrome

Sign in to get your bookmarks, history, passwords, and other settings on all your devices. [Learn more](#)



d. They will then be prompted to sign into Chrome, where they should use their @simsburyschools.net username and password.

e. After the student has signed in on this new profile they can 'Link data' so they receive all of the benefits of Chrome. None of your user data will be linked if you have followed the above steps.



f. Now that you have your student signed in as a separate 'Person', you can now switch back and forth easily between users. Click the name or picture icon on the top of your Chrome browser. Switch to the user you would like by clicking on a different name.